

Swop Mop Sponge Mop

> User Guide

Swop Mop Holder

800933 | 29.7cm

800928 | 33cm

Viscose Sponge

801104 | 29.7cm

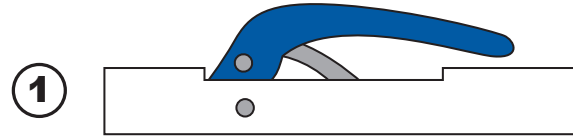
801103 | 33cm

Autoclavable Sponge

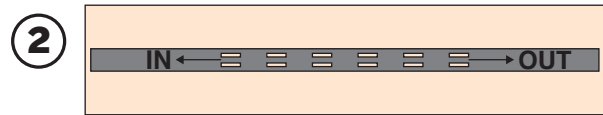
800934 | 29.7cm

800929 | 33cm

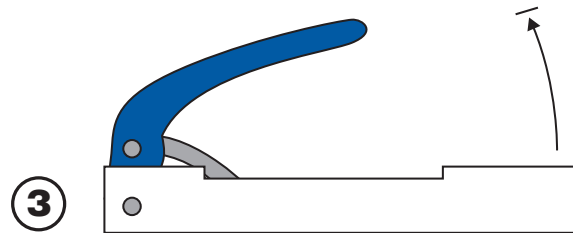
- 1 Push hand lever to the full forward position. This brings the sponge holder into the correct position to accept the sponge.



- 2 Using the arrows located on the sponge for guidance, slide the sponge into position.

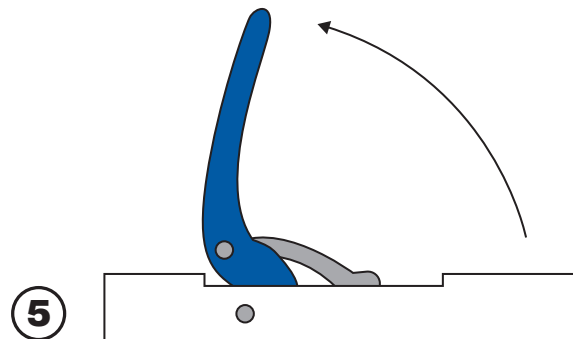


- 3 Bring the hand lever into hold position. This allows the rollers to secure the sponge in position.



- 4 Immediately submerge the sponge into water for 20 seconds. The expansion of the sponge will lock it in place during use. (Do not allow sponge to touch the bucket base during this time.)

- 5 To remove excess water, pull back the lever until the rollers move over the sponge, squeezing out all the water, then return to the hold position. (But not back to Step 1 as this allows the sponge to be released).



NEVER attempt to wring out when the sponge is dry as this will damage the wringing mechanism.

NEVER force a replacement sponge into holder, check the position (STEP 2.) of the arrow on the sponge.

ALWAYS store sponge wringers by hanging them on the handle hook.



syrcclean.com